



For more info & video visit www.agrinomix.com



Home

About Us

Products

Service

Parts

Search

Contact Us

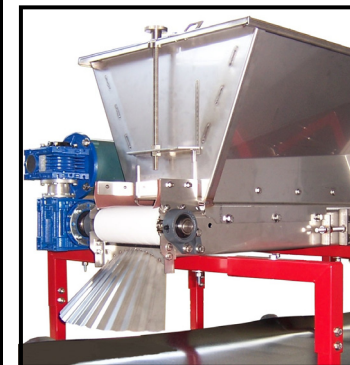
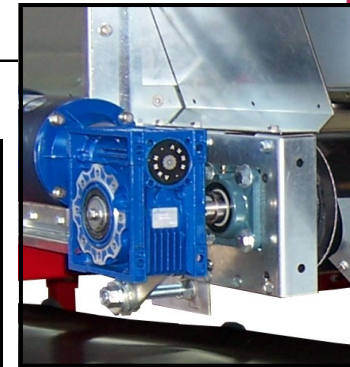
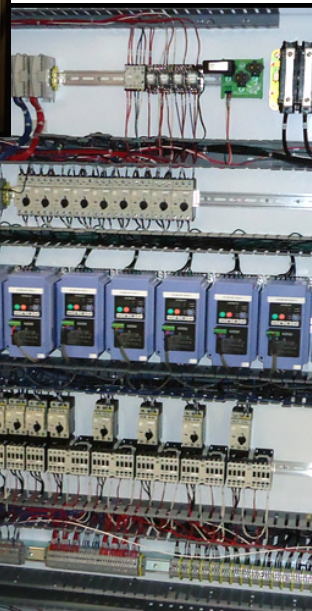
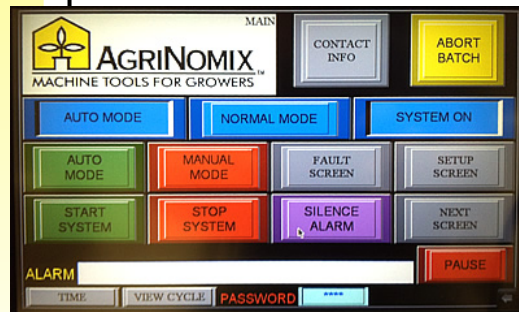
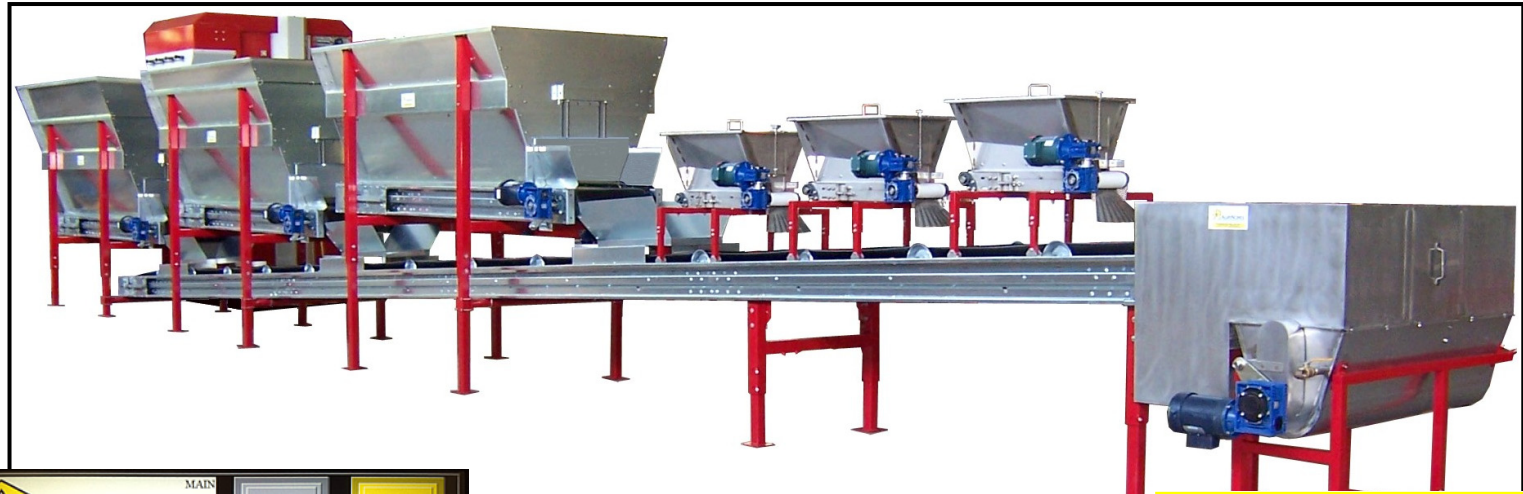
OFFERING SYSTEMS FOR:

- Transplanting
- Soil mixing and distribution
- Plug tray fillers
- Integrated seeding lines
- Dispensers and fillers for flats and pots
- Plug grading and consolidation
- Planting lines for cuttings
- Watering booms
- Stationary / movable conveyors
- Custom automation
- Labeling equipment
- Rolling bench growing systems
- Rolling bench automation
- Vision grading and shipping systems
- 24 hr. technical assistance
- Installation & service

300 Creekside Drive
Oberlin, Ohio 44074
Tel: 440-774-2981
1-800-354-3750
Fax: 440-775-2104
www.agrinomix.com



[See Product Video](#)



Specifications:

- Soil Output:**
36 – 120 yards per hour – per requirement
- Bulk Hoppers:**
 - * 20" side walls
 - * Rubber vulcanized head pulley
 - * Heavy gauge galvanized steel construction
 - * Low level sensors in each hopper
 - * Modular design for rapid order fulfillment and customization
- Chemical Hoppers:**
 - * Low level sensors in each hopper
 - * Stainless steel construction
 - * Double gear reduction for precise chemical ratios
- Soil Mixing Conveyor:**
 - * Rubber vulcanized head pulley
 - * Low-friction roller bed
 - * Integrates with soil processing attachment
- Electrical Requirements:**
208/230 VAC 3 phase (standard)
- Features:**
 - * Optional computer controlled recipes
 - * Direct-drive inverter duty motors
 - * Control system designed for integration with peat bale processors and multiple production lines
 - * Color touch-screen operator interface panel